

HOSPITALITY PACK



FEATS 2013

Festival of European Anglophone Theatrical Societies

The Hague

17TH – 20TH MAY 2013

CONTENTS

1	Accommodation	3
2	Transport	5
3	Whilst you're here	7
4	Eating out	8
5	Useful information.....	9
6	Hospitality desk	12
7	Opening times	13
8	Tickets and tokens.....	14
9	Party	14
10	Wifi and Apps	15
11	Green room	15
12	Fringe	16
13	Adjudicator	16

1 ACCOMMODATION

This year, we do not have any 'block bookings' in hotels for FEATS visitors and participants; the best deals are available online, but here are a few of our suggestions. More hotels can be found on www.denhaag.nl. The Hague has many different hotels in and around the city centre – so, have a look around.

The 'TI: links' (Tourist Information links) bring you to the Tourist Information Office site. Booking through this site might provide you with cheaper deals than by booking through the hotel's own website.

The approximate walking distance to/from the Koninklijke Schouwburg (where FEATS 2013 will be held) is given.

Novotel Den Haag

Prices from: €89 

Walking distance: 650m (8 minutes)

Hofweg 5-7

2511AA Den Haag

(+31) 70 2039003

Hotel website: [Novotel \(www.accorhotels.com\)](http://www.accorhotels.com)

Tourist Info Link: [TI: Novotel](#)

Hotel Des Indes

Prices from: €220 

Walking distance: 270m (3 minutes)

Lange Voorhout 54 - 56

2514EG Den Haag

(+31) 70 3612345

Hotel website: [Hotel Des Indes \(www.desindes.nl\)](http://www.desindes.nl)

Tourist Info Link: [TI: Hotel Des Indes](#)

Mercure Den Haag Centraal

Prices from: €85 

Walking distance: 900m (11 minutes)

Spui 180

2511BW Den Haag

(+31) 70 2039002

Hotel website: [Mercure \(www.mercure.com\)](http://www.mercure.com)

Tourist Info Link: [TI: Mercure](#)

Paleis Hotel

Prices from: €135 

Walking distance: 750m (9 minutes)

Molenstraat 26

2513BL Den Haag

(+31) 70 3624621

Hotel website: [Paleis Hotel \(www.paleishotel.nl\)](http://www.paleishotel.nl)

Tourist Info Link: [TI: Paleis Hotel](#)

Ibis Den Haag City Centre

Prices from: €65 

Walking distance: 1km (13 minutes)

Jan Hendrikstraat 10


2512GL Den Haag

(+31) 70 3184319

Hotel website: [Ibis \(www.ibis.com\)](http://www.ibis.com)

Tourist Info Link: [TI: Ibis](#)

Court Garden Hotel

Prices from: €115 

Walking distance: 2.1km (26 minutes)

Laan Van Meerdervoort 96

2517AR Den Haag

(+31) 70 3114000

Hotel website: [Court Garden Hotel \(www.hotelcourtgarden.nl\)](http://www.hotelcourtgarden.nl)

Tourist Info Link: [TI: Court Garden](#)

HolidayInn Express Parliament

Prices from: €100 ★★☆☆☆

Walking distance: 190m (2 minutes)

Lange Houtstraat 5

2511 CV Den Haag

(+31) 70 8209980

Hotel website: [HolidayInnExpress \(www.hiexpress.com\)](http://www.hiexpress.com)

Tourist Info Link: This is a new hotel and not on the Tourist information website yet.

Babylon Hotel Den Haag Centraal

Prices from: €89 ★★★★★

Walking distance: 800m (9 minutes)

Bezuidenhoutseweg 53

2594 AC Den Haag

(+31) 70 3814901

Hotel website: [Babylon Hotel \(www.hampshire-hotels.com\)](http://www.hampshire-hotels.com)

Tourist Info Link: [TI: Babylon Hotel](#)

Hotel La Ville

Prices from: €90 ★★

Walking distance: 1.1km (13 minutes)

Veenkade 5-6

2513 EE Den Haag

(+31) 70 3463657

Hotel website: [Hotel La Ville \(www.hotellaville.nl\)](http://www.hotellaville.nl)

Tourist Info Link: This hotel is not on the Tourist Information website.

NH Hotel The Hague

Prices from: €92 ★★★★★

Walking distance: 2km (26 minutes)

Prinses Margrietplantsoen 100

2595 BR Den Haag

(+31)70 3812345

Hotel website: [NH The Hague \(www.nh-hotels.nl\)](http://www.nh-hotels.nl)

Tourist Info Link: [TI: NH The Hague](#)

Hilton Den Haag

Prices from: €119 ★★★★★★

Walking distance: 1.1km (13 minutes)

Zeestraat 35

2518 AA Den Haag

(+31) 70 7107000

Hotel website: [Hilton The Hague \(www.hilton.com\)](http://www.hilton.com)

Tourist Info Link: [TI: Hilton The Hague](#)

Mozaic Hotel

Prices from: €89 ★★★★★

Walking distance: 1.4km (17 minutes)

Laan Copes van Cattenburch 38

2528 GB Den Haag

(+31) 70 3522335

Hotel website: [Mozaic Hotel \(www.mozaic.nl\)](http://www.mozaic.nl)

Tourist Info Link: [TI: Mozaic Hotel](#)

2 TRANSPORT



2.1 PUBLIC TRANSPORT

The Hague boasts an excellent public transport system. Over 30 bus and tram lines will take you quickly and safely to your destination in and around The Hague.

This year, there are major road improvement schemes happening in and around The Hague. You may well find that certain trams and buses are running different timetables and routes. You can find out all the up to date transport information using [this link](#).

The OV-chipcard is now the most common system of paying for transport throughout The Netherlands. The OV-chipcard is the size of a bank card and is a prepaid card which you can use to travel anywhere within the Netherlands by Train, Bus, Tram, RandstadRail and Metro.

A card will cost you €7.50, to purchase. This will then need to be loaded with money (minimum €5). These can be purchased from most ticket machines in the train stations.

How does it work?

Journey costs are per kilometre. Simply ensure your euro total has enough to see you to the end of your journey.

Card readers will be at the stops, the stations or on the transport itself: hold your card to the reader as you board to check in, and again as you leave to check out, and the journey cost or product will be deducted and you'll see your current total.

In addition to the OV-chipcard, you can still use a (paper) season ticket or the 24-hour day ticket, which can be purchased from the train ticket and information offices at Centraal



and Hollands Spoor train stations. Passengers can also purchase tickets from the bus or tram driver.

Read more on the website of the [OV-chipcard](#).

2.2 TAXIS

All reputable and legal taxi services in The Hague have BLUE number plates. This means that they are registered services. Please ensure that you only get into a taxi with a blue number plate!

- Taxi Centrale Haaglanden: (0031) 70 3906262
- De Hoofdstad Taxi Centrale: (0031) 70 3462626
- Haagse Taxi Mobilfoon Centrale: (0031) 70 3907722

2.3 GREEN CABS

For the environmentally conscious amongst you, **gCabs** are a fun and inexpensive option. Fares are €5 between any two points in the city centre within 2km. You can also arrange a one hour guided tour of the city for two people, for €50.

For more information, contact gCabs on: (0031) 88 0121000

2.4 TUK-TUKS

For a fun and exotic way to get around, why not hire a Tuk-Tuk? Call (0031) 65 2606402 for more details.

2.5 BICYCLE HIRE

There are bicycle rental shops at [Centraal Station](#) and the [Hollands Spoor](#) train stations, both of which are easy to access.

You can also try one of the following:

- ★ [Rent a Bike The Hague](#) - Noordeinde
- ★ [Du Nord Bicycle Rental](#) - Keizerstraat (Scheveningen)

This is a good opportunity to have a go on the classic Dutch bicycles and cycle your way around our city! Legally, you aren't required to wear a cycle helmet, There are bicycle paths everywhere around the city and drivers do look out for cyclists. Nevertheless, please use proper caution in traffic.



3 WHILST YOU'RE HERE



Guided tours will be

setting off from the Koninklijke Schouwburg theatre at 10am on the Saturday and Sunday mornings. There will be a designated member of our team showing you around our historical city for approximately 2 hours. The tour will cost €5. There will be a **maximum of 30 participants per day** - we will split into 2 groups for the tour. To sign up for one of our exciting tours, visit the Hospitality Desk at the Koninklijke Schouwburg.



We have also organised a tour of The Peace Palace on Saturday. It is necessary to pre-book - you can't just walk in! If you would like to sign up for this, please register with us at hospitality@feats.nl. **If you're interested, sign up quickly - maximum 15 people.**

This year, the Peace Palace is celebrating its 100 year anniversary. It is the icon of The Hague, the international city of peace and justice.

For the more adventurous of you, who want to organise yourselves, try these links:

- ★ [Local Tour Guides](#) - you can organise a private tour with a local (maximum 6 people per tour).
- ★ [Sightseeing in The Hague](#) - link to lots of different activities and attractions for you to visit.
- ★ [Scheveningen](#) - The Hague is a city near a beautiful coast. If the weather is good, try this site!
- ★ For every piece of information you could possibly ever want about our city, simply [click here](#) to visit the city website.

4 EATING OUT

The Hague is home to a very diverse range of places to eat. It is a melting pot of many cultures and this is reflected in the cuisine on offer. For a traditional taste of The Netherlands, make sure that you try Bitterballen. These bar snacks can be found everywhere you go – morning, noon or night (they're not vegetarian).



Close by the theatre, you will find many restaurants that offer 'Pre-theatre dinners' at reasonable prices, or you can do it all under one roof and eat in the theatre's restaurant, *Theater Brasserie Wasserman*.

Behind the theatre is the popular and busy 'Plein', which has many eating and drinking establishments where you can sit in the sunshine (hopefully!) and watch the world go by.

Further into the city centre, you will find a large amount of reasonably priced restaurants – all within easy walking distance of the theatre.



Outside of the city centre is Scheveningen. This busy seaside resort and harbour is home to lots of seafront bars and restaurants. Check out some of the famous 'Strandpaviljoens' (beach front establishments) for a relaxed afternoon in the sun.

For a sample of some the places to try out, go to www.diningcity.com.

Looking for somewhere or something specific? Ask one of our hosts or hostesses for their recommendation.



Bitterballen



5 USEFUL INFORMATION

5.1 THEATRE INFORMATION

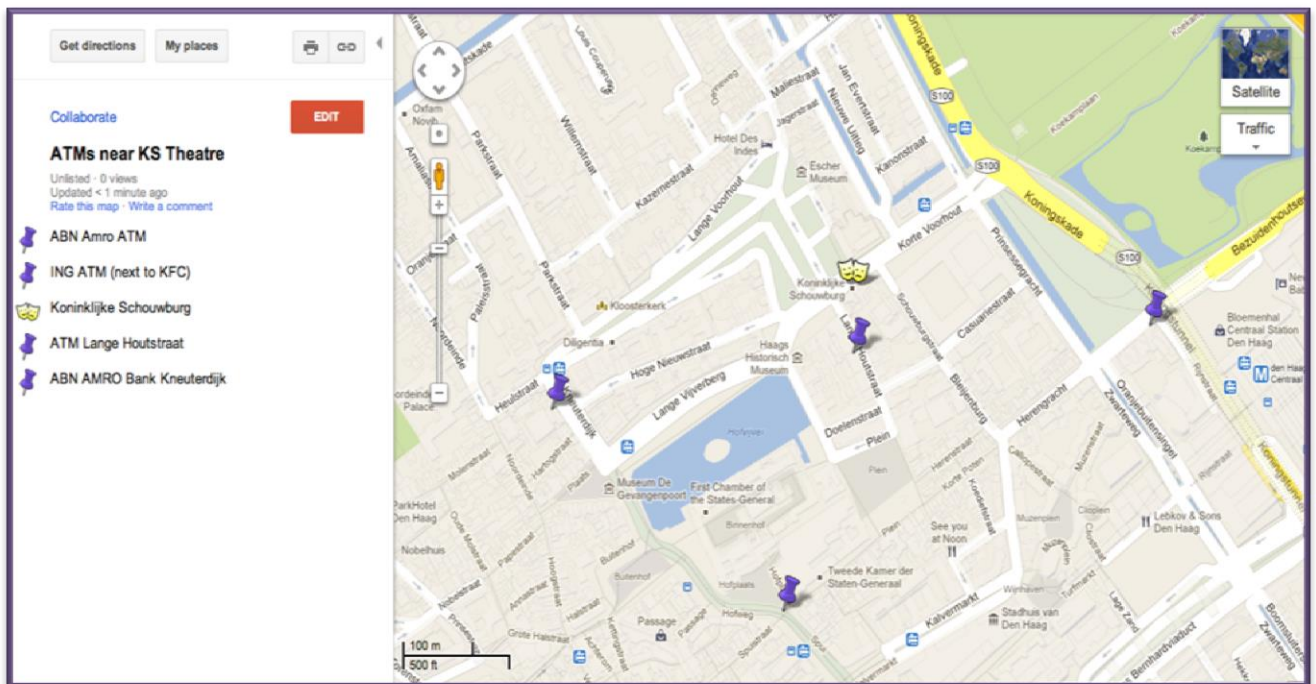
The Koninklijke Schouwburg theatre is a unique, modern theatre, housed within a classical façade. It dates from 1766. It is the Royal Theatre of The Netherlands and is the home of the National Theatre. The theatre has been running since 1804, and was renovated extensively in 1999.

Het Paradijs, the small theatre in which the Fringe Festival will be held, is located on the top floor of the theatre and is the perfect location for smaller productions, due to its intimate atmosphere.



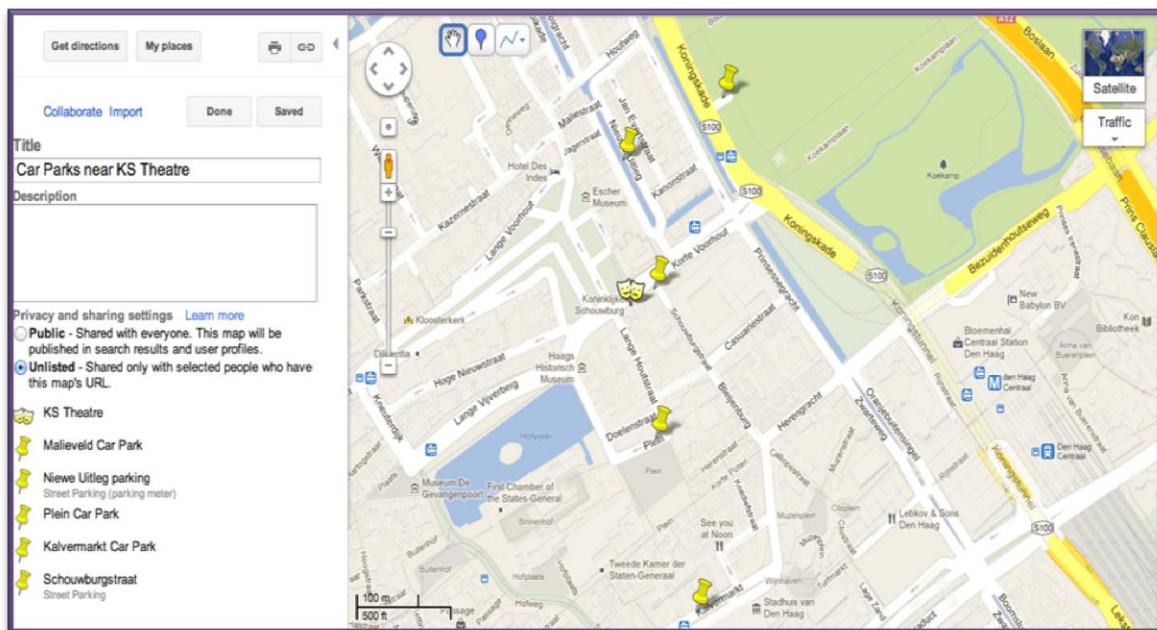
The AATG are very privileged to be working with the KS to host another FEATS international festival here this year. For more details on the theatre, visit www.ks.nl.

5.2 CLOSEST CASH MACHINES



5.3 CAR PARKING

There are a lot of car parks and spaces on the streets in and around the city, but they are very expensive. We encourage you to use public transport where possible. Here is a map of a few of the closest parking spots.



If you are a participating group and are looking for information about van parking during the festival, you will be receiving this information in early May.

5.4 EMERGENCY NUMBERS

Emergency Services in The Netherlands can be reached by dialing **112**

Local hospital:

Bronovo Hospital (Accident & Emergency here)

Bronovolaan 5

2597 AX Den Haag

(0031) 70 3124141

Public transport: Buses 22, 23 and 28 go directly to the hospital.

Emergency Duty Doctor:

For emergencies outside of normal working hours, call the doctors' night and weekend service:

SMASH - (0031) 70 3469669

After Hours Pharmacy:

To find information about open after hours pharmacies, call (0031) 70 3451000

Emergency Dentist:

To find information about open after hours dentists, call (0031) 70 3110305

6 HOSPITALITY DESK

At our desk, you can buy tokens for food and drink, programmes, memorabilia and party wristbands.

You can sign up for one of our guided tours around The Hague, or ask one of our knowledgeable staff anything FEATS or The Hague related!

6.1 OUR STAFF

Each visiting Theatre Group will be allocated a host or hostess for the day, and the rest of the team will be very visible, in our purple FEATS t-shirts, around the theatre.

Your friendly hosts and hostesses will be able to answer any questions or queries you have about The Hague (hopefully!) Please don't hesitate to ask!

Team leaders:

- ★ Lara Vinsen
- ★ Joanne Wright

(contact: hospitality@feats.nl)

Team:

- | | | |
|----------------------|----------------------|--------------------------|
| ★ Dick van den Broek | ★ Odelia Marvan | ★ Mark Smith |
| ★ Kyle Buijs | ★ Frederick Milders | ★ Christina Thomas |
| ★ Evi Marian Butles | ★ Laura Parry-Davies | ★ Danielle Claire Thomas |
| ★ Eva Carter-Mallée | ★ Danielle Rado | ★ Renee Weersma |
| ★ Emma Chapman | ★ Jenny Read | ★ Teresa Weersma |
| ★ Peter Dady | ★ Charlotte O'Reilly | ★ Kerry Wilkinson |
| ★ Kathryn Hannis | ★ Valentina Rinaldi | |

7 OPENING TIMES

7.1 FESTIVAL PERFORMANCES

Performances for the main festival will begin at 19.30 every day (2nd play approximately 20.40, 3rd play approximately 21.50).

Each evening there will be 2 intervals to allow performers to construct and deconstruct their sets.

7.2 FRINGE PERFORMANCES

Performances will be from 13.30 - 17.00 Saturday, Sunday and from 14.00 - 17.00 on Monday.

7.3 THEATRE OPENING TIMES

The theatre will be open to the public from 16.00 on Friday, and from 12.00 for the rest of the festival.

Box Office in the theatre: 16.00 - 19.30 daily.

Telephone: Tuesday - Saturday 13.00 - 17.00. Call 0900 3456789 for tickets.

7.4 HOSPITALITY DESK OPENING TIMES

The Hospitality Desk will be open to the public:

Friday - 16.00 - 20.00 and during intervals.

Saturday - Monday - 12.00 - 2.00 and during the intervals.

7.5 FEATS FORUM

Monday around 12.00 (time and location to be announced during the festival). This is an open discussion with anyone who wishes to come along, plus the Steering and Organising Committees. It is a discussion about the running of FEATS.

8 TICKETS AND TOKENS

8.1 TICKETS

Available by visiting the theatre website www.ks.nl and through the FEATS website www.feats.nl.

Tickets are also available on the day from the theatre box office. Call 0900 3456789.

Tickets for performances cost:

€20 - one evening

€70 - whole festival - all 4 days.

€50 - whole festival discount for cast crew and under 21s.

€15 - one evening discount for under 21s.

8.2 TOKENS

FEATS is a cashless festival. Tokens for food and drink within the theatre will be available to buy at the Hospitality Desk.

Tokens will cost €1.25 each. You will be able to return unused tokens before the end of the festival if necessary.

9 PARTY

We are having a party, and you're invited!

It will take place on SUNDAY night (after the last production is over, until 2am) upstairs in the theatre.

It's free - come along!



10 WIFI AND APPS

WiFi is available free within the Koninklijke Schouwburg theatre. The code will be on a board in the Green Room and in the foyer on a daily basis; or ask a member of the Hospitality Team for further details.

There are some great Apps that will help you find your way around The Hague. We have found that if you simply type 'The Hague' or 'Den Haag' into your App Store (Apple or Android), you will find some great Apps to help you find your way around the city.

Some of our favourites are:

- ★ The Hague (official city hall)
- ★ Netherlands Highlights
- ★ Mobility Trip
- ★ City Walks The Hague
- ★ Tripwolf

11 GREEN ROOM

For performing groups, the Green Room is located backstage, on the ground floor. Your host/hostess will show you where.

In here, we offer free tea, coffee and water.

Sandwiches are available every day from €5-8.

Lunch can be provided (Indonesian cuisine) from €12.50. This price includes a soft drink.



12 FRINGE

The Fringe festival will be held Saturday 18th, Sunday 19th and Monday 20th May in the small theatre, Het Paradijs (upstairs in the KS theatre building).

Never been to Fringe before? Why not give it a try? Fringe is a FREE festival!

For a full list of participating groups, please look at the FEATS website.

The FEATS Fringe offers a chance for groups to perform something that doesn't necessarily fit the main Festival's requirements. Any group can offer a performance which does not have to be a play - singers are always welcome, and one year we even had jugglers! This year, we're offering a range of plays. The Fringe always ends with the FEATS Skit, where various happenings during the Festival are given the publicity they deserve.

13 ADJUDICATOR

Our adjudicator for the festival will be Mr Colin Dolley.

Mr Dolley is currently the chairman of GoDA (Guild of Drama Adjudicators). He has been a member of GoDA since 1982 and has a wide range of experience in adjudicating UK and international theatre festivals.

His qualifications and experience include:

- ★ London University Certificate in Speech and Drama
- ★ Scottish Assn. of Speech and Drama Adjudicators
- ★ Author (with Rex Walford) of "The One-Act Play Companion" (published by A&C Black in 2006)
- ★ Judging panel for the Annual National Festivals Association Play-writing Competition



For more information, visit the [GoDA website](#).

WE LOOK FORWARD TO
SEEING YOU IN MAY!